



**Heterogeneous** Project vinyl

# eternal<sup>®</sup> de luxe



25 m x 2 m

creating better environments

**Forbo**

FLOORING SYSTEMS



## eternal<sup>®</sup> de luxe

---

***ETERNAL IS KNOWN FOR IT'S WIDE VARIETY OF DESIGN AND OUTSTANDING PERFORMANCE IN MANY DEMANDING APPLICATIONS.***

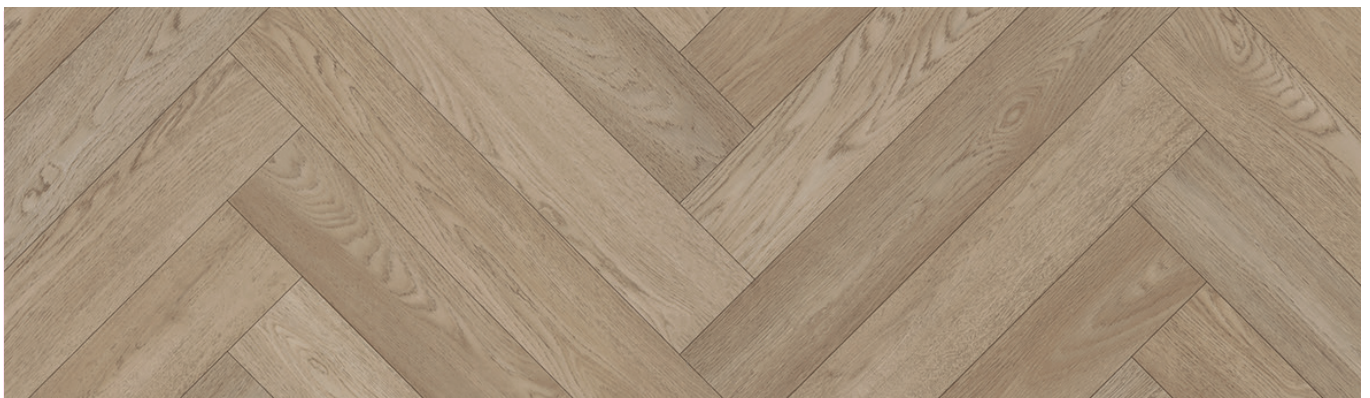
It creates better environments in which to work, live, interact, relax, heal, learn and play. Eternal has a proven track record of delivering reliable and beautiful solutions. Eternal de Luxe is focused on high end design, performance and comfort.

The Decibel construction of 3 mm thickness has a 17 dB acoustic rating and ergonomic construction. The Compact construction of 2 mm, offers the best best possible residual indentation and durability.





3074 | classic large herringbone



3073 | blond large herringbone

LRV 32

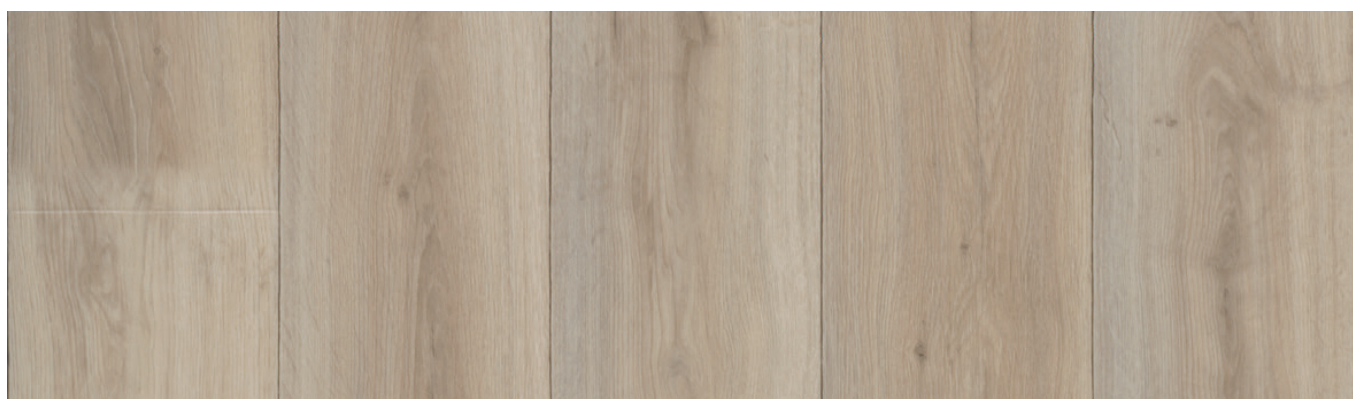


3074 | classic large herringbone  
2754

LRV 21



**3018** | whitewashed oak



**3018**  
**2858** | whitewashed oak

LRV 37



**3016**  
**2856** | light honey oak

LRV 36



**3010** | warm honey oak

LRV 22



**3093** | warm elegant oak



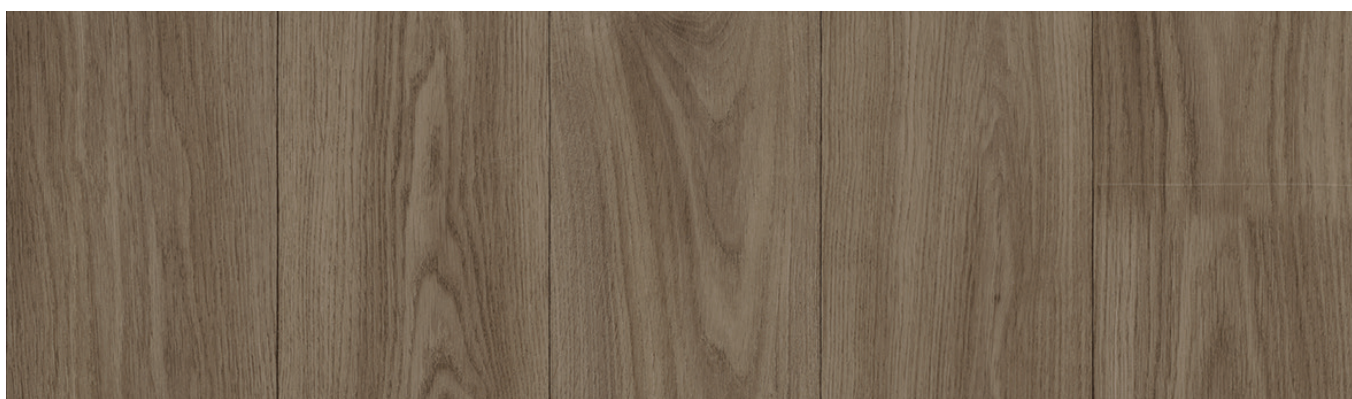
**3092** | bleached elegant oak  
**2712**

LRV 30



**3093** | warm elegant oak

LRV 26

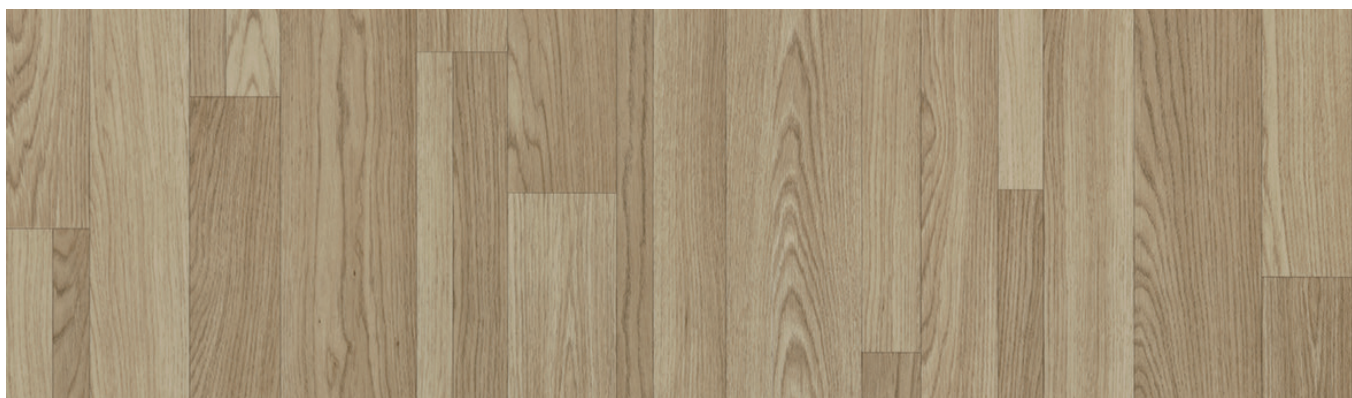


**3094** | dark elegant oak

LRV 17



3006 | multisize hazelnut oak



3005 | multisize light oak

LRV 33

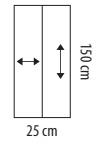


3006 | multisize hazelnut oak  
2816

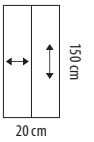
LRV 16

# eternal® de luxe

PUR Pearl™



25 cm  
pale oak &  
natural oak



20 cm  
grey pine &  
golden oak



**3024** | grey pine  
**2894**

LRV 30



**3048** | pale oak

LRV 38



**3045** | natural oak  
**2865**

LRV 29



**3052** | golden oak  
**2842**

LRV 24



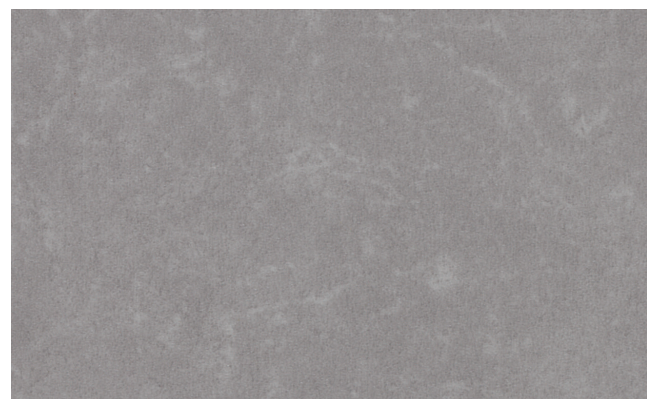


**3066** | mortar concrete



**3066** | mortar concrete

LRV 37



**3117** | white neutral grey

LRV 34



**3067** | graphite concrete

LRV 23



**3111** | light neutral grey

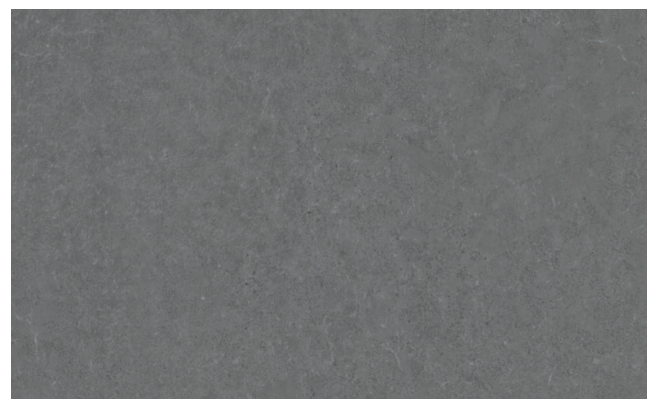
**2781**

LRV 25



**3068** | warm concrete

LRV 21



**3112** | mid neutral grey

**2782**

LRV 14



Eternal de Luxe offers the impressive aesthetics of luxury vinyl tiles in sheet format.

## COMFORT IN DESIGN

- Warm and natural colour tones in wood and concrete create a 'feel at home' atmosphere in any commercial application
- In register embossing on almost all wood designs for a highly realistic look and feel
- Large planks up to 150 cm length and large scale concrete designs for the best possible aesthetic

## COMFORT IN QUALITY

- Eternal is known for exceptional quality and has been proven in the marketplace with millions of square metres installed every year
- Highest quality consistent PUR lacquering giving long protection against scuffs and scratches
- Decibel construction specifically designed for comfort underfoot and less impact on the body
- Decibel product offers adhesive free installation up to 40 m<sup>2</sup> without use of adhesives

## COMFORT IN SUSTAINABILITY

- When installed adhesive free the product can be fully recycled in line with the circular economy
- All production waste is reused in the backing of the compact version

# Technical specifications

Eternal de luxe meets the requirements of EN ISO 10582 and EN ISO 26986

		Eternal de luxe compact	Eternal de luxe decibel
	Total thickness	EN ISO 24346 2.0 mm	3.0 mm
	Surface finish	PUR Pearl	PUR Pearl
	Wear layer thickness	EN ISO 24340 0.70 mm	0.70 mm
	Wear layer binder content	EN ISO 10582 Type 1	Type 1
	Collection size	10	20
	Domestic use	EN ISO 10874 Class 23	Class 23
	Commercial use	EN ISO 10874 Class 34	Class 33
	Light industrial use	EN ISO 10874 Class 43	Class 42
	Roll width	EN ISO 24341 2.0 m / 4.0 m	2.0 m / 4.0 m
	Roll length	EN ISO 24341 ≤ 25 m	≤ 25 m
	Total weight	EN ISO 23997 2800 g/m <sup>2</sup>	2555 g/m <sup>2</sup>
	Dimensional stability	EN ISO 23999 ≤ 0.1 %	≤ 0.1 %
	Slip resistance (ramp test)	DIN 51130 R10	R10
	Castor chair continuous use	ISO 4918 Pass	Pass
	Residual indentation Typical value	EN ISO 24343-1 ≤ 0.05 mm ~ 0.02 mm	≤ 0.15 mm ~ 0.10 mm
	Colour fastness to light	EN ISO 105-B02 method 3 ≥ 6	≥ 6
	Indoor air emissions: TVOC after 28 days	EN 16516 ≤ 0.05 mg/m <sup>3</sup>	≤ 0.05 mg/m <sup>3</sup>
	Acoustical impact noise reduction	EN ISO 717-2 5 dB	17 dB
	Resistance to chemicals	EN ISO 26987 Very good	Very good
	Flexibility	EN ISO 24344 ø 10 mm	ø 10 mm
	Water tight installation	EN 13553 Yes	Yes
	Life Cycle Assessment	LCA is the foundation for securing the lowest environmental impact.	
	Creating better environments		
	Renewable electricity	Eternal de luxe is manufactured using 100% electricity from renewable sources	
	Recycled content	Eternal de luxe compact contains up to 70% recycled content in the backing	
	Back to the Floor	Installation off cuts can be collected via Back to the Floor.	
	Ska Rating	Eternal de Luxe meets the Ska Rating criteria for M12 soft floor coverings in office, retail and higher education schemes.	
Eternal de luxe meets the requirements of EN 14041:2004			
	Product code	EN 14041:2004 0200105-DoP-306	0200403-DoP-306
	Reaction to fire	EN 13501-1 Bfl-s <sub>1</sub> , G, NCS	Bfl-s <sub>1</sub> , G, NCS
	Slip resistance	EN 13893 μ ≥ 0.30	μ ≥ 0.30
	Thermal conductivity	EN 12524 0.25 W/mK	0.25 W/mK
	Body voltage	EN 1815 ≤ 2.0 kV	≤ 2.0 kV



All Forbo Flooring Systems' sales organisations worldwide have a certified Quality Management System in accordance with ISO 9001. All Forbo Flooring Systems' manufacturing operations have a certified Environmental Management System in accordance with ISO 14001. The Life Cycle Assessment (LCA) of Forbo Flooring Systems' products is documented in individual Environmental Product Declarations (EPD's) which can be found on all of our websites.

**UK**  
Forbo Flooring UK Limited  
High Holborn Road,  
Ripley, Derbyshire, DE5 3NT

**London EC1 showroom**  
79 St John Street, Clerkenwell  
London EC1M 4NR  
Tel. 0207 553 9300

**For commercial enquiries :**  
If calling from the North,  
London & South East  
Tel. 0800 0282 162  
If calling from Scotland,  
Midlands & South West  
Tel. 0800 0935 258

**Nuway enquiries :**  
Tel. 01773 740 688

**Residential enquiries :**  
Tel. 0800 0935 846

E-mail : [info.flooring.uk@forbo.com](mailto:info.flooring.uk@forbo.com)  
[www.forbo-flooring.co.uk](http://www.forbo-flooring.co.uk)

**Samples :**  
**Tel. 0800 731 2369**  
**Email: [samples.uk@forbo.com](mailto:samples.uk@forbo.com)**

**Ireland**  
Forbo Ireland Ltd.  
2 Deansgrange Business Park  
Blackrock  
Co Dublin  
Tel. 00353 1 2898 898  
E-mail : [info.ireland@forbo.com](mailto:info.ireland@forbo.com)  
[www.forbo-flooring.ie](http://www.forbo-flooring.ie)

Whilst Forbo Flooring UK Limited does its best to ensure that the contents of this samplebook are correct and accurate at the time of publication, to the fullest extent permitted by law, Forbo Flooring UK Limited makes no, and expressly disclaims all, guarantees of any kind, expressed or implied in respect of the information, content, materials or products displayed in this samplebook and does not represent that the information is accurate, complete or current and you are advised to visit our website at [www.forbo-flooring.co.uk](http://www.forbo-flooring.co.uk) for up-to-date details or corrections to such contents.

**Registered office :**  
Forbo Flooring UK Limited  
High Holborn Road - Ripley  
Derbyshire DE5 3NT  
Registered in England 9200318

